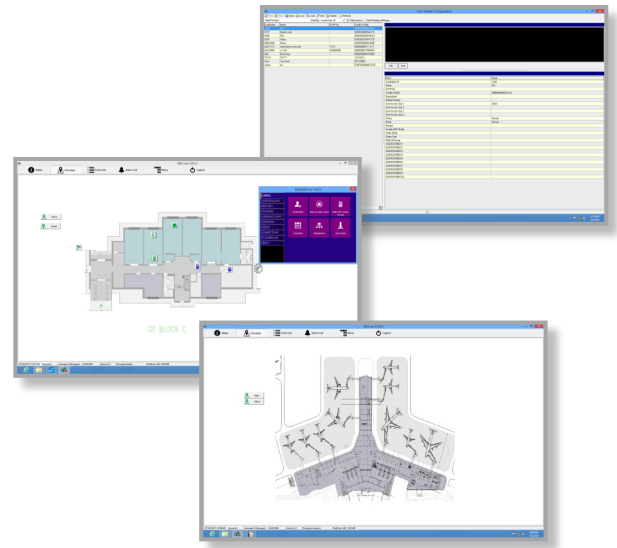


The **IBSS2000** is a scalable enterprise Security Management System that is the central command and control centre for the entire corporate security requirements.

Built on industry standard open protocols, the IBSS2000 is extremely flexible and can operate from a standalone MS Windows based workstation, to multiple Servers and Workstations across TCPIP based LAN and WAN.

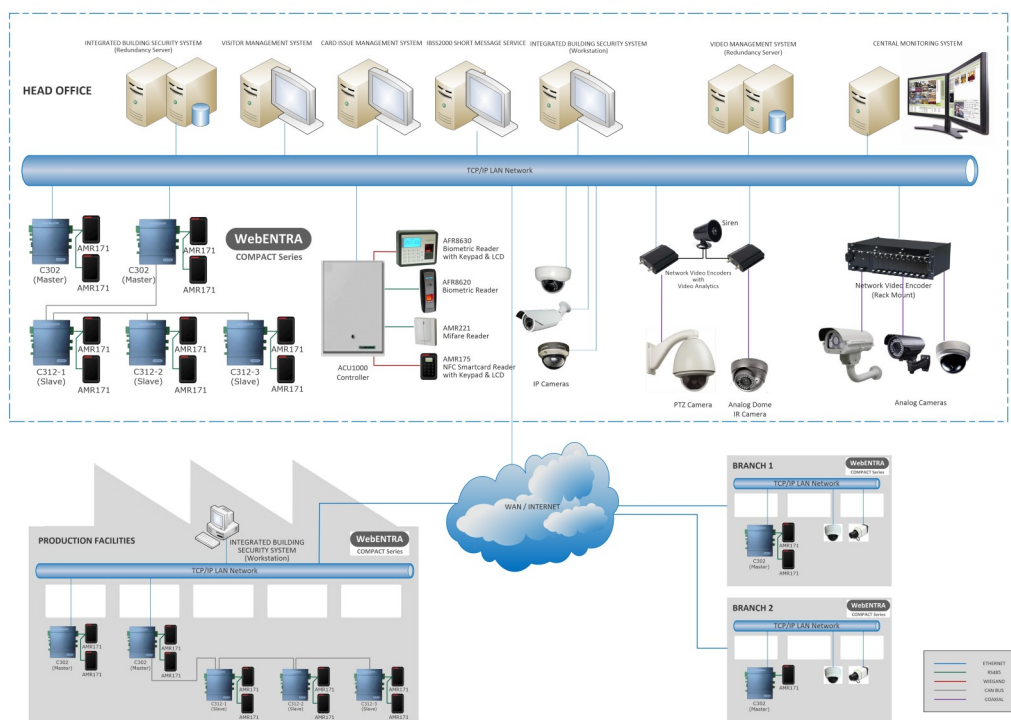
The unlimited graphical floorplan support with dynamic real time status icons and sophisticated event/alarm management capabilities far exceed the expectations of the most demanding security managers.



Key Features

- **Flexible System Configuration**
True Client-Server architecture with LAN/ WAN connectivity with using TCPIP
- **Easy to Use**
Full Windows-based Graphical User Interface (GUI) with buttons and icons for easy access to screens, SQL compliant server database
- **Graphical Floorplan Display**
Unlimited floorplans and zoom levels, use of icons to represent devices, with colour change or blinking according to the real time status
- **Alarm Management**
Display all current alarm events, automatically loads the appropriate graphics by clicking on an alarm item
- **Action Sequence**
Activate a list of predefined actions upon alarm trigger via user configured action sequence (macros) for global cross-subsystem device triggering
- **Access Levels and Database Partitioning**
Multiple access levels with password protection by user configuration
- **Data Import/ Export & Reporting**
Easy data import/ export in EXCEL, PDF & JPG formats, and create own report templates
Time attendance reports available
- **Integration Options**
CCTV, Intercom, Public Address System, Building Automation & Fire Alarm System, Video Switching/ Distribution, Photo ID Badging System, Guard Tour
- **Webcam Support**
For Cardholder photo capture
- **Variable Font Type Support**

Schematic Diagram



SYSTEM ARCHITECTURE DIAGRAM

Technical Specifications

Specifications*	IBSS2000
Description	Integrated Security Management Software v.5
Server (min. requirement)	Intel Pentium Dual CPU E2200 @2.20GHz
	8GB RAM
	1TB HDD
	19" Monitor
	Network Card (NE2000 compatible) 10/100BaseT
	Windows Server 2008/2008 R2/2012 Operating Systems
Workstation (min. requirement)	Intel Core i5 CPU
	4GB RAM
	500GB
	Windows 7/7 Pro/8/8 Pro

*Specifications are subjected to changes without prior notice

Ordering Information

Model No.	Description
IBSS2000CD	IBSS2000 Security Management Software v.5 Media Kit
IBSS2000L1	IBSS2000 Application Software LEVEL 1 (Local Operations Only, Up to 4 Readers)
IBSS2000L2	IBSS2000 Application Software LEVEL 2 (Up to 2 Clients, Up to 32 Readers)
IBSS2000L3	IBSS2000 Application Software LEVEL 3 (Up to 4 Clients, Up to 128 Readers)
IBSS2000EN	IBSS2000 Application Software ENTERPRISE (Up to 8 Clients, Up to 2048 Readers)
IBSS2000EC	Additional Client for IBSS2000
IBSS2000CM	Card Issue Management Software (CIMS)
IBSS2000MS	IBSS2000 Short Message Service (SMS) module